

ITECH MENTOR

"Full of Tech Senses"

COMPANY PROFILE

Exploring The Creative Possibilities Of A Digital Life:
Designing, Coding, Consulting and More



About Us

Our Deep Understanding of modern technology and expertise in multiple business domains enable us to implement comprehensive projects and deliver high-end web, mobile and IoT solutions.

In Addition to developing custom software products tailored to specific business needs, we support our clients throughout the entire process : from idea generation to implementation. As a result of our solid background, flexibility, and full transparency, we have become a trusted technological partner for our clients. We prrde ourselves on providing high - quality products and services at ITechMentor.

Expertise in Business Domains



FINANCIAL



AUTOMOTIVE



PHARMACY



ADTECH & MARKETING



TRAVEL & HOSPITALITY



ADVISORY



EDUCATIONAL



REAL ESTATE



FASHION



HEALTHCARE



RETAIL



FITNESS



MEDIA & ENTERTAINMENT



LOGISTICS





Why Us ?

Highly Experienced team with apt expertise in various technologies.

Immediate action on the project according to your needs.

Give additional white label services on demand.

Dedicated Development Resources (DDR).

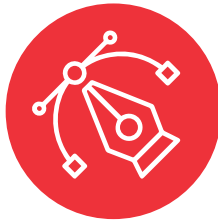
Confidentiality of your project details.

Highest ROI for your services.

SOLUTIONS WE BUILD



**Digital Marketing
Services**



**Design &
Advertisement**



**Video
Production**



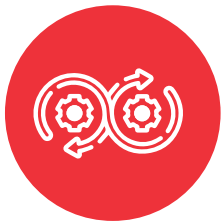
**Product
Brainstroming**



**Technology
Development**



**Cloud Computing
Company**



DevOps



**Testing/Quality
Analysis**



**Enterprise
Solutions**



**SAAS
Products**



**E-Commerce
Websites**

Technologies We Use



Web



HTML 5



Angular 4



React JS



WordPress



Shopify



Bootstrap



Mobile



React Native



Xamarin



Native Android



Native iOS



Cordova



IONIC



Back-end



Python



PHP - Code



PHP - Laravel



Node JS - Mongo DB



NET



WordPress



Cloud



AWS



AZURE



GCM



QA



Selenium



jMeter



Blazemeter

DevOps



Azure Cloud



Google Cloud



AWS



Docker



Kubernetes

Our Client

MG INTERIORS



blinkit



TAAL TECH
Accelerate Your Success

Aarna[®]
KITCHEN IMPRESSIONS

Business Models

Due to the fact that every project is unique, ITechMentor has created different outsourcing business models for you to choose from. There is no rigidity to these models, and any business model can be combined with another model based on your requirements. As an offshore web development company, we offer fixed cost, monthly hiring, and hourly rates.

White Label Service

Adding more services to your business doesn't have to be expensive or stressful since white label services mean you don't have to invest in new staff, training, or equipment. We have created custom white label products for a number of businesses over the years, including design, development, and marketing agencies.

Due to our flexibility, we are willing to be a part of your team or to work behind the scenes as a subcontractor and no-name brand service that allows you to present work to your clients despite not producing it yourself.

Fixed Cost Service

If you're thinking of building something awesome and you have a clear idea of Design and development, send us your requirements for website development, Application development, and design considerations. Our team will contact you if we have any questions or need to discuss this further.

Once we finalize the above, we will be sending you the cost and timeline for your project.



Dedicated Development Resources



Cost - Effective - Choosing Dedicated Development Resources and hiring dedicated, highly experienced resource(s) will help you reduce the employee payroll budget, infrastructure cost, recruitment cost as well as offering a very reasonable hourly cost.



Non-Disclosure Agreement - NDA is strictly followed at Dedicated Development Resources and we take full responsibility not to share the information with anyone. We adhere to the latest security measures, so your data will be 100% secured against any unauthorized access.



Weekly Model - To make the payment easy for clients, we are here with weekly payment model where you will be paying for the dedicated resources you hire on a weekly basis.



No Lock-in Period - We offer DDE with no lock-in period. So, you can use the services as and when required.



FULL CYCLE DEVELOPMENT SERVICES



Business Analysis

We analyze business needs and offer the best solution for our clients.



UI/UX Development

We create seamless and efficient user flows.



Development

We hire only highly experienced IT Professionals.



Testing

Our goal is to make our products work without fails.



Deployment

We assist companies in deployment, scaling and maintenance of applications.



Data Management

We help to manage all the business data in the system the right way.



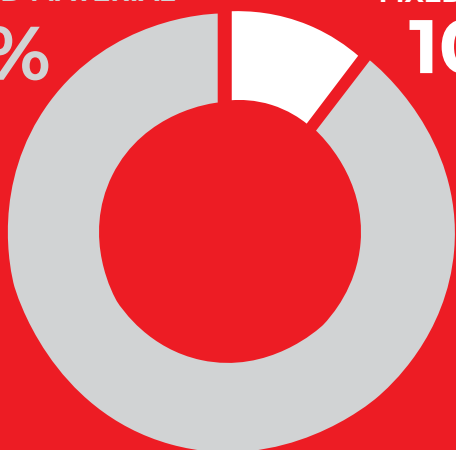
ENGAGEMENT MODELS

TIME AND MATERIAL

90%

FIXED PRICE

10%



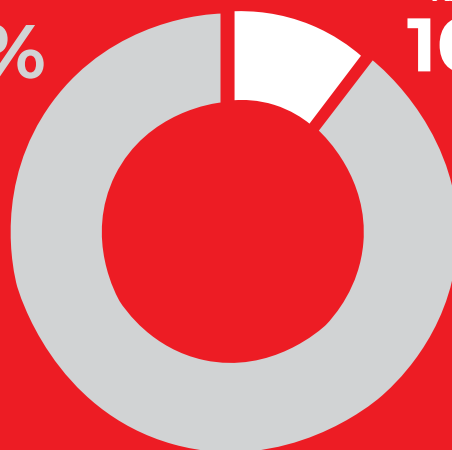
METHODOLOGIES

SCRUM

90%

KANBAN

10%



Our Clients are always active participants in the project development lifecycle, controlling the progress and having an opportunity to introduce changes at anytime. As a result, we guarantee high quality of the final product and our services by supporting transparency of the working process.

Head Office

F-26, Hawre Fantasia Business Park,
Sector 30A, Vashi, Navi Mumbai- 400703

Follow us



www.itechmentor.com